

# **BMW/Corvette Adapter Kit**

**Part #15020**

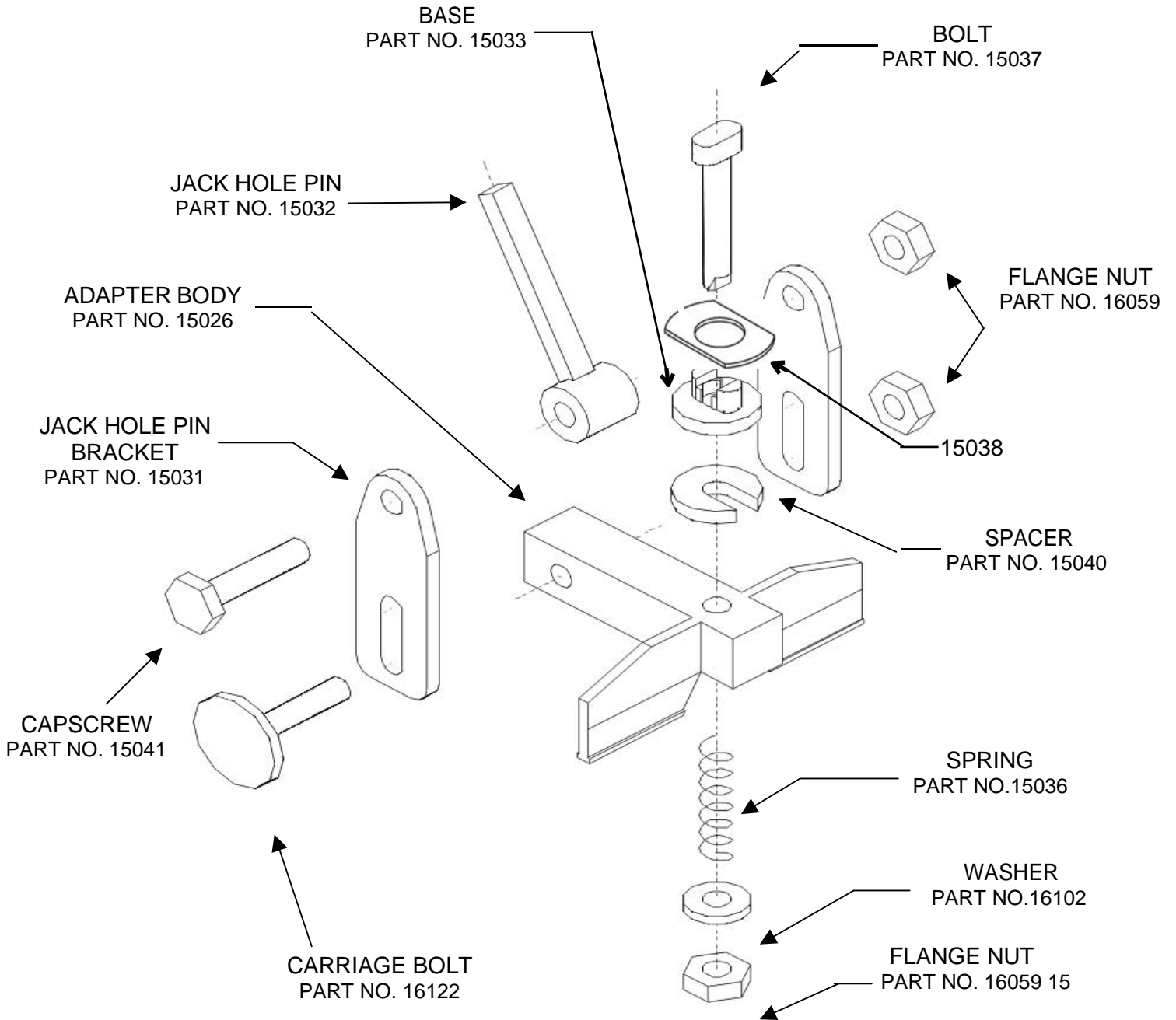
**User Manual**

[Wedge Clamp Systems Inc.](#) 170 – 21320 Gordon Way, Richmond, BC V6W 1J8  
Tel: (604)207-9595 | Fax: (604)207-9593 | Toll Free: 1-800-615-9949



# PARTS DIAGRAM

#15020 BMW/Corvette Adapter Kit



1. Remove rocker covers if necessary.
2. Jack up car (front and back) and place safety stands underneath.
3. Remove jack hole covers
4. Align the position of the bolt with the pin base. Add spacer if necessary. Holding the body assembly (**Figure 1**), insert spring loaded bolt and base into rocker panel hole (**Figure 2**) until flush. Turn the spring loaded bolt 90° (1/4 turn) until it drops into a locked position (**Figure 3**). Tighten the flange nut, using a 24mm or 15/16 socket or wrench.



**Figure 1**



**Figure 2**



**Figure 3**

5. If vehicle is equipped with a side-jacking hole, insert Jack Hole Pin (**Figure 4**) into jacking hole and tighten nuts on Jack Hole Pin assembly.

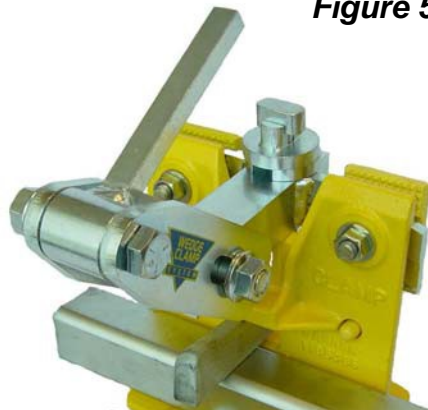
6. Attach pinchweld clamps to Adapter using the **higher mounting position (Figure 5)** or the **lower mounting position (Figure 6)**. To use the lower position, first remove the springs from jaw brackets before mounting clamp to the adapter body.



**Figure 4**



**Figure 5**



**Figure 6**

7. Install anchoring crossbar, insert wedges and hammer firmly.
8. Repeat steps 1-7 at rear of vehicle.
9. Position the anchoring stands and lower crossbar onto stands.
10. Install 6' crossbars between the front and rear clamps on both sides.
11. Re-tighten adapter flange nuts on all four adapters.
12. Check and firmly hammer all wedges to secure a safe setup.

On some later model BMWs and Corvettes, the height of the flange in the rocker panel hole may be lower than in previous years. To ensure that the adapter has a snug fit, Part # 15038 washer (**Figure 7**) can be placed on the base before inserting the bolt into the rocker panel hole (**Figure 8**).



**Figure 7**



**Figure 8**