

# Mercedes Adapter Kit

**Part #15220**

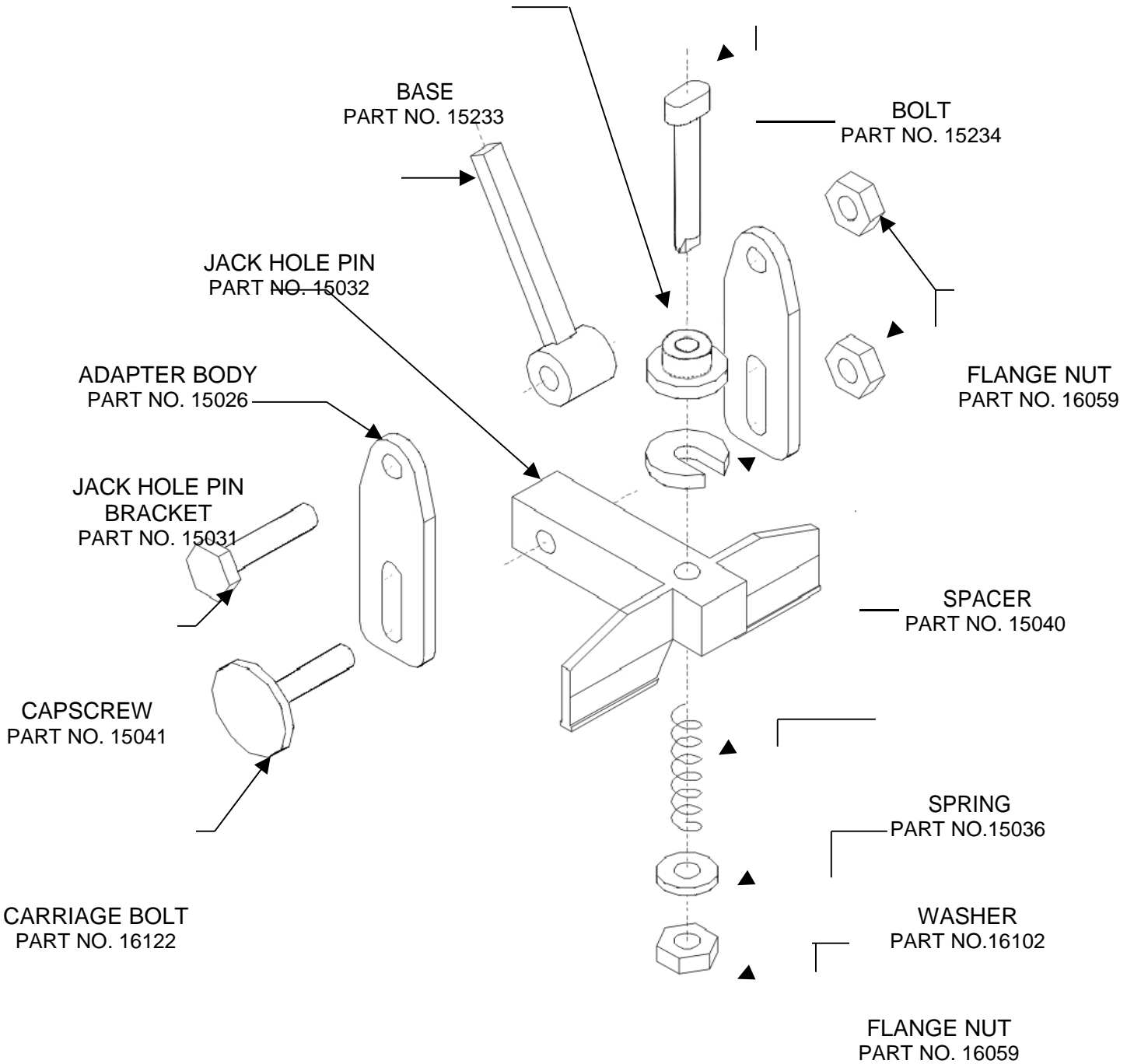
**User Manual**

Wedge Clamp Systems Inc. 170 – 21320 Gordon Way, Richmond, BC V6W 1J8  
Tel: (604)207-9595 | Fax: (604)207-9593 | Toll Free: 1-800-615-9949

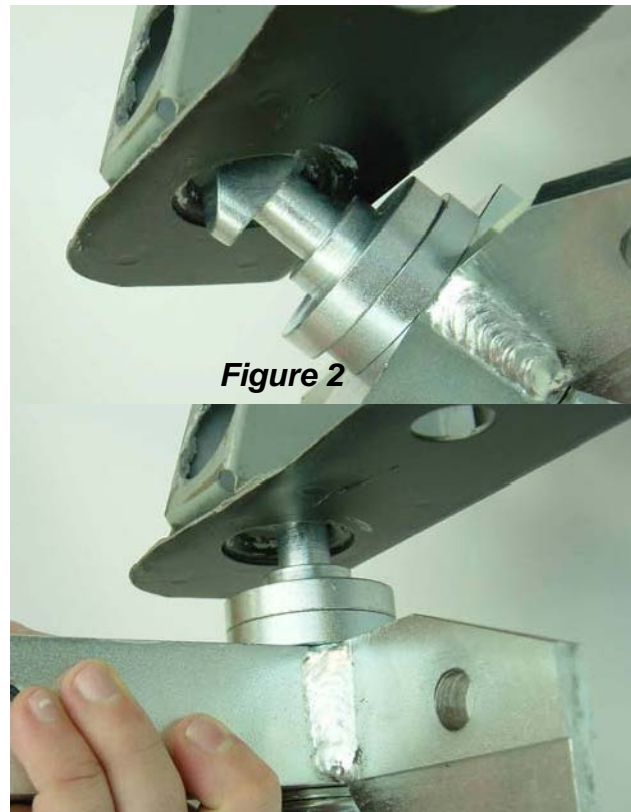


# Parts Diagram

#15220 Mercedes Adapter Kit



1. Remove rocker covers if necessary.
  2. Jack up front end.
  3. Remove jack hole covers
  4. Align the position of the bolt with rocker panel hole, adding spacer if necessary.
- Holding the body assembly (**Figure 1**), first insert longer end of the spring loaded bolt (**Figure 2**) at an angle. Level the body assembly until the short end of the bolt can also fit into the rocker panel hole (**Figure 3**). Tighten the flange nut, using a 24mm or 15/16 socket or wrench – the base will center the bolt .



**Figure 2**

**Figure 3**

5. If vehicle is equipped with a side jacking hole, insert Jack Hole Pin (**Figure 4**) into jacking hole and tighten nuts on Jack Hole Pin assembly.
6. Attach pinchweld clamps to Adapter using the higher mounting position (**Figure 5**) or the lower mounting position (**Figure 6**). To use the lower position, first remove the springs from jaw brackets before mounting clamp to the adapter body.



**Figure 4**



**Figure 6**



7. Install anchoring crossbar, insert wedges and hammer firmly.
8. Position the anchoring stands and lower crossbar onto stands.
9. Repeat steps 4-7 at rear of vehicle.
10. Install 6' crossbars between the front and rear clamps on both sides.
11. Re-tighten adapter flange nuts on all four adapters.
12. Check and firmly hammer all wedges to secure a safe setup.