

**FASTER.
SMARTER.
BETTER.**





Wedge Clamp – a growing global presence.

The Wedge Clamp system originated in the restless mind of a master collision repair technician working in Vancouver, British Columbia, Canada. Dubious about the new wave of bench systems apparently poised to change the way bodymen anchored and pulled damaged vehicles, and backed by his entrepreneurial employer at a large and successful Vancouver collision repair shop, Raine Riutta began sketching designs for a simpler and more affordable alternative to the cumbersome and costly benches.

The result was a refreshing new approach to the way damaged vehicles could be anchored, measured and straightened – one based on a lightweight but incredibly strong system of wedges and clamps that used the shop’s concrete floor as an anchor base and adapted to any unibody vehicle.

Since that time in the 1980s, the amazing Wedge Clamp system has slowly but surely been changing the car repair process in enlightened bodyshops all over the world. With more than 27,000 installations today in countries from Australia to South Africa, autobody technicians are delighting in the many benefits of its ingenious simplicity. No more heavy lifting, no more unwieldy pieces of equipment, no more having to move vehicles around the shop every time they perform a different task. Now able to tie virtually any full-frame or unibody car or light truck to floor-mounted rails or pots in mere minutes, body techs save time and effort in anchoring, measuring and pulling. Repairs are faster, easier and more profitable for the business owner. And clean-up is a breeze, with many of the components hanging in racks on the wall, ready for the next job.

Wedge Clamp’s continued growth includes our recent opening of a California office to add to our existing locations in Richmond, British Columbia and Suzhou, China. And we are expanding our product lineup – starting with the new Stat-Gun anti-static device (page 12) and the Eclipse Electronic Measuring System (page 16).

The most exciting chapter in the Wedge Clamp saga is just beginning.

Thanks for coming along.



Inside

| | | |
|-----------|---|-------|
| 4 | Anchoring systems | |
| | EZE Tie Down System | 4 |
| | Chainless Anchoring System | 5 |
| | Full-frame Anchoring System | 6 |
| 7 | Anchoring adapters | |
| | Honda, BMW, Mercedes-Benz, etc. Adapter Kit | 7 |
| 8 | Wedge Clamp measuring systems | |
| | Pivot Measuring System | 8 |
| | Length & Height Accessories | 9 |
| | Pivot Quick Mount Kit..... | 9 |
| 10 | Pulling systems | |
| | Quick-Pull 5000, EZE Roller Pulling Tower, Monocoque Tower..... | 10 |
| | Comparison chart..... | 11 |
| 12 | Stat-Gun | |
| | Say goodbye to halos and denibbing..... | 12-13 |
| 14 | NitroHeat | |
| | Our hot painting system..... | 14-15 |
| 16 | Eclipse measuring system | |
| | For ease of use and accuracy, the Eclipse will have you beaming | 16-17 |
| 18 | Clamps, pulling accessories and anchoring rails | |
| | Accessories and Anchoring Rails | 18-23 |
| | Chain Board Kit | 24 |
| | Clamping Kit..... | 24 |
| | Down Pull Tool Board | 24 |
| 25 | Dual work station solution | |
| | Steel/Aluminum Systems | 25 |
| | Wedge Clamp Warranty..... | 25 |
| 26 | Lifting system | |
| | EZELift | 26 |
| 27 | Training | |
| | We’ll train you..... | 27 |



Stat-Gun



NitroHeat



Eclipse

Wedge Clamp's Anchoring Systems exceed the demands of today's high-tech bodyshops while maximizing the use of available floor space – allowing your technicians to complete all structural and sheet metal work in a single repair bay.

1. EZE Tie Down System – for light, fast jobs

The EZE Tie Down System is for light pulls and panel pulls – and ideal for quick pulls on radiator supports, sheet metal alignments, door posts, etc. Its speed, light weight and portability make it perfect for 'Express' production bays. Body techs can complete light repairs and finishing metalwork in a

single bay in the shortest time possible – increasing any shop's quality and productivity.



Vehicles are quickly mounted. No floor jack required.



1 Center vehicle between Anchoring Rails. Install the EZE Tie-Down Sill Clamps at the front and rear torque box areas of the vehicle.



2 Slide Anchoring Bars through EZE Tie Down Sill Clamps. Make sure Anchoring Bars are centered. Insert Wedges into EZE Tie Down Sill Clamps. Secure using a 3 lb. hammer.



3 Slide Rail Dogs into place on Anchoring Rails (front and rear).



4 Place EZE Tie Down Anchoring Towers over Rail Dogs and slide Anchoring Towers up to Anchoring Bars.



5 Insert Crossbar Lock Plate through EZE Tie Down Anchoring Towers and over Anchoring Bars.



6 Drive Wedges into Crossbar Lock Plate and EZE Tie Down Anchoring Towers. You're ready to go!

EZE Tie Down System includes:

- 4 EZE Tie Down Anchoring Towers (#22049)
- 4 EZE Tie Down Sill Clamps (#22029)
- 4 Strongback (#22025)
- 12 Wedges (#20060)
- 4 Rail Dogs (#22040)
- 2 80 in. Anchoring Bars (#17103)
- 2 Anchoring Rails Bevelled and 1-1/2 slotted (#17851 – not shown)
- 72 Anchoring Bolts

Optional: System without anchoring rails (#22100)

For shops large or small, Wedge Clamp's light weight, portability and affordability make it the smartest choice for increased productivity and profitability.

2. Chainless Anchoring System – for medium-size jobs



Designed for medium-size jobs, the Chainless Anchoring System ties to compact rails mounted either on top of the floor or embedded flush into the concrete. The low-weight aluminum stands allow effortless set up (shown with 19000 Pivot Measuring System).

Chainless Anchoring System includes:

- 1 Sill Clamp Set, set of 4 (#17000)
- 1 Anchoring Bar Set, set of 4 (#17100)
2 x 72 in. (1828 mm) bars (#17100A)
2 x 80 in. (2032 mm) bars (#17100C)
- 4 Chainless Anchoring Stand (#17600)
- 4 Surface Mounting Anchor Bolt Set (#17704)
- 4 Rail, Bevelled and 1-1/2 Slotted (#17851)
- 1 Instruction Manual (#17011)



Chainless Anchoring System mounted on optional Wall Rack (#10050).

CHAIN ANCHORING SYSTEM ALSO AVAILABLE

We also build chained anchoring systems to order. Just call or email us.

3. Full-Frame Anchoring System – for trucks and SUVs



Wedge Clamp is also the best solution for SUVs and full-size trucks, easily able to accommodate full-frame vehicles and vastly improving productivity on damage assessment and repair. Only Wedge Clamp uses a unique, patented universal 2-axis swivel clamp that adapts to virtually all vehicle frame configurations – so you can set up faster using fewer adapters and parts. The solid box frame the body technician forms under the vehicle is lightweight, strong and very versatile, because it can be mounted on the floor or on a frame rack, and used in combination with a mid-rise lift (such as our EZELift in this photo).

Already have a Chainless Anchoring System?

Update it with the Full-frame Anchoring Adapter Kit (#92850) at minimal cost. Optional Wall Rack (#10050) and 84 in. (2.134 m) and 96 in. (2.438 m) side bars available.

Full-frame Anchoring Adapter Kit (#92850) includes:

- 2 Frame Anchoring Beams
- 4 Universal 2-Axis Swivel Clamps
- 4 Swivel Clamp Bases
- 24 'C' Spacers
- 4 Full Spacers
- 4 Channel Adapters
- 12 Wedges
- 2 Leaf Spring Adapters
- 4 C-Channel Adapters (2032 mm)
- 1 Wall Storage Board

Full-frame Anchoring System (#92800) includes:

- 4 7 ft. (2.13 m) Rails: Beveled & Slotted
- 2 80 in. (2032 mm) Anchor Sidebars
- 2 Frame Anchoring Beams
- 4 Chainless Anchoring Stands
- 4 Universal 2-Axis Swivel Clamps
- 4 Swivel Clamp Bases
- 144 Surface Mounting Bolts
- 24 'C' Spacers
- 4 Full Spacers
- 4 Channel Adapters
- 16 Wedges
- 2 Leaf Spring Adapters
- 4 C-Channel Adapters
- 1 Wall Storage Board



Above: optional Wall Rack (#10050)

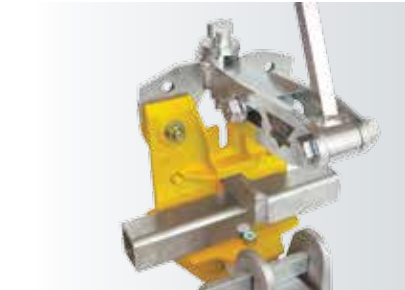
Anchoring Adaptor Systems

All Anchoring Adaptors operate with the standard Wedge Clamp pinchweld clamp to provide secure four-point anchoring for most unibody and frame vehicles.



Honda Adapter Kit (#15150)

Set of four. Allows clamping of both horizontal pinchweld and vertical jacktab. Adjusts for height and width. Anchors Honda and Acura models.



BMW/Corvette Adapter Kit (#15020)

Set of four. Adjustable anchoring pins and side jackhole pins allow anchoring of BMW and Corvette models (with or without jack tubes).



Mercedes-Benz Adapter Kit (#15220)

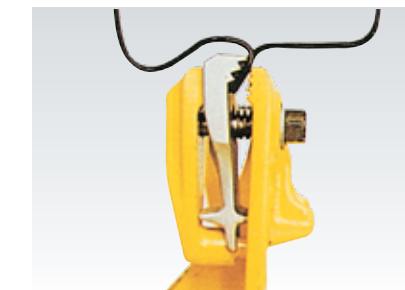
Set of four. Adjustable anchoring pins and side jackhole pins allow anchoring of Mercedes models (with or without jack tubes).



Wide Body Adapter Kit (#15000)

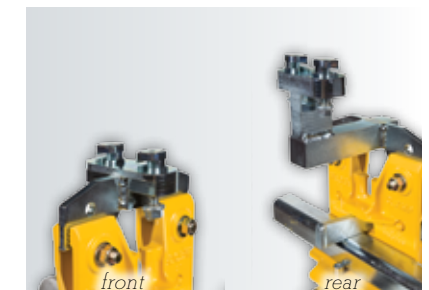
Set of four brackets allow anchoring of vehicles with a pinchweld spacing up to 77 in* (1956 mm). Anchors very wide vehicles such as GM's Astro Van and Ford's Aerostar.

*Note: when anchor rails are spaced 72 in. apart.



Angle Pinchweld Adapter Kit (#17013)

Set of four fit to each Wedge Clamp jaw. Allows anchoring of angled pinchwelds.



Renault Adapter Kit (#15050)

Set of two front and two rear adapters to anchor Renault models.



Rack Adapter (#93050)

Adapts frame racks with 3-1/2 in. posts to Wedge Clamp System.



Chart Rack Adapter (#93060)

Adapts Chart System to Wedge Clamp System.



Additional Adaptors available for Blackhawk, Continental, Korek (not shown).



Pivot Measuring System (#19100)

Easy to set up, ultra-precise for restoring factory specs in mere minutes and with patent awards worldwide, this unique system has proven to increase productivity in thousands of shops.

Meet a three-dimensional measuring system that's so simple and affordable, you can equip every technician in your shop with one. The Pivot Measuring System can be used independently for damage appraisal or together with your straightening equipment during a repair. It uses an ingenious (and patented) rotating/telescoping action to access the entire vehicle from multiple angles – all from a single mounting point. It's easily moved clear of the repair area or to measure other points. The pointers mount on a cross-scale which can reach any part of the vehicle.

The Pivot Measuring System can be used alone or with our Length and Height Accessory – making 3D spec book measurements anywhere on the vehicle. Fewer pieces to assemble means set-up is faster and easier than other systems. And accuracy is assured because the system remains mounted to the vehicle throughout the repair process.

The system self-confirms correct calibration, and automatically eliminates factory build-tolerance in the vehicle. Versatile mounting bracket makes damage assessment fast and easy – whether the vehicle is on or off your straightening equipment.



Pivot Measuring System hangs on wall to save space. Mounting board is 93 x 24 in. (2362 x 610 mm).

Pivot Quick Mount Kit (#24000)

The Pivot Quick Mount Kit mounts the Pivot Measuring System on any vehicle pinchweld or set of flanges. The kit comes with a carrying case.



Length & Height Accessory (#15400)

The Length and Height accessory is used with the Pivot Measuring System to give you three-dimensional spec book measuring anywhere on the vehicle. This system is especially useful in repairs of heavily hit vehicles where large sections are being repaired or replaced.



THREE TOWERS OF STRENGTH.

How much power do you need? From 5 to 15 tons, our three towers – the Quick-Pull 5000, EZE Roller and Monocoque – make any side or downpull easy and quick.

MONOCOQUE TOWER is a compact pulling unit designed for floor rail anchoring. This unit requires only 29 in. (737 mm) of floor space inward from the anchoring rail and leaves plenty of room for working in narrow repair bays. The Monocoque Tower allows two independent pulls to be made simultaneously at heights ranging from 5 in. (127 mm) above floor level to a 6 ft. 6 in. (1.98 m) pull height.

EZE ROLLER PULLING TOWER combines ease of use with rugged durability. It can be used with floor pot anchoring or rail anchoring layouts. Allows two independent pulls to be made simultaneously. Pull height ranges from 10 in. (254 mm) above ground to 7 ft. (2.13 m) with a turn of the crank. A high-performance pulling unit for fast, efficient straightening. Also available in a 10 ft. (3.05 m) pull height version (#13100). All specifications are the same as #13000.

QUICK-PULL 5000 TOWER Features independent pulling towers that give you fingertip mobility for fast pull adjustment. Make double pulls with ease and accuracy. Hydraulic pressure gauges eliminate "overpull."



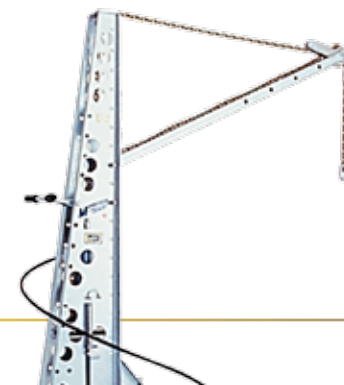
| | QUICK-PULL 5000 TOWER | EZE ROLLER TOWER | MONOCOQUE TOWER |
|--------------------|--|--|--|
| Capacity | Light duty – pulls up to 5 tons. | Full 10-ton pull capacity with fast-action air/hydraulic pump. | Fast-action air/hydraulic pump aids 15-ton pull capacity. |
| Pull height | Pull heights from 10 inches (254 mm) to 5 ft. (1.52 m). | Pull heights from 10 in. (254 mm) above ground to 7 ft. (2.13 m) for pulls on roof areas and trucks. Hand crank adjusts height with more safety and less effort. | Pull heights from 10 in. (254 mm) above ground to 6 ft. 6 in. (1.98 m) for pulls on roof areas and trucks. Aluminum pulleys make height adjustment easy. |
| Pull stroke | Dual independent pulling capacity lets you set up 2 pulls at once. | 20 in. (508 mm) continuous stroke on a single pull. | 20 in. (508 mm) continuous stroke on a single pull. |
| | | Chain lockout forks allow continuous pulling without releasing pull pressure. Dual independent pull capabilities. | Chain lockout forks allow continuous pulling without releasing pull pressure. Dual independent pull capabilities. |
| Hydraulics | Pull-pressure gauge monitors pull force and stress release. | Pull-pressure gauge monitors pull force and stress release. | Pull-pressure gauge monitors pull force and stress release. |
| | Top quality 5-ton hydraulic pump, hose and ram carry full manufacturer's warranty. | Top quality 10-ton hydraulic pump, hose and ram carry full manufacturer's warranty. | Top quality 15-ton hydraulic pump, hose and ram carry full manufacturer's warranty. |
| | Spring-loaded hydraulics allow fast, automatic ram retraction and flush-mounting or on above ground rails. | Spring-loaded hydraulics allow fast, automatic ram retraction and flush-mounting or on above ground rails. | Spring-loaded hydraulics allow fast, automatic ram retraction and flush-mounting or on above ground rails. |
| Mobility | Swivel wheels – easy mobility for set up and storage. Custom-made handle for easy maneuvering. | Spring-loaded caster wheels allow fingertip mobility for fast setup of pulls, easier storage. Wheels retract during pulling to prevent wheel damage. | Spring-loaded rear swivelling caster wheels give mobility, fast setup, self-centering and easy storage. Wheels retract to prevent damage. |
| Chain | Special grade 80 alloy pulling chain ensures strength, durability and safety. | Special grade 80 alloy pulling chain ensures strength, durability and safety. | Special grade 80 alloy pulling chain ensures strength, durability and safety. |
| Features | 20% smaller footprint than EZE Roller Tower. | Claw hook allows versatile clamp attachments. | Claw hook allows versatile clamp attachments. |
| | Ideal for use with EZE Tie Down System. | Comes with all necessary accessories including tie-down chain and hook. | Rail tie-down lets tower pull at angles to floor rail. |
| | Convenient tray holds hydraulic pump, clamps and accessories. | Safety strap helps protect operator if a clamp lets go. | Convenient basket holds hydraulic pump, clamps and accessories. |
| | | Nylon strap supports ram carriage and will not fray like metal cables. | Built-in bottom tray for pump storage. |
| | | Convenient basket holds hydraulic pump, clamps and accessories. | |
| Finish | Epoxy powder-coat and tough zinc plating assure lasting finish. | Epoxy powder-coat and tough zinc plating assure lasting finish. | Tough zinc plating assures lasting finish. |



Back Brace (#20600) An optional back brace joins two Monocoque Towers together, allowing additional pulls to be made between them. Includes 6 ft. (1.83 m) Bracing Beam, Mounting Brackets (2), Pulling Brackets (2), Locking Wedges (4), 5 ft. (1.52 m) Lifting Beam with Support Chain and Lock, 5 ft. (1.52 m) Plated Alloy 5/6 in. Support and Chain, and 2 Chain Pulleys.



Remote control (optional) lets you control two separate pulling towers with single device for double independent pulls.



Engine Lift Accessory (#20500) allows vertical pulling or lifting using the tower's hydraulics. Provides 5 ft. (1.52 m) of horizontal reach beyond the tower.



Pressure gauge accurately monitors pull force and stress relief as you work the metal.

NO MORE HALOS. NO MORE DENIBBING. LOOK WHAT OUR NEW STAT-GUN CAN DO FOR YOU.

Actual quote from one of our distributors:

After making jokes about the 'ray gun,' an account we visited agreed to try it for a couple of days. When we went back to pick up the Stat-Gun, we were uncertain of the outcome. To our surprise, they did not want to give it back. Both painters stated that they did not have to denib a single car before applying the clear coat, blending was much easier, and as for the metallics, the jobs went smoother, the finish quality was better, and time was saved. Sold! They offered to buy the demo on the spot.

With static gone, your paint jobs suddenly become better, faster and cheaper.

Even the best paint booths are vulnerable to static electricity. Static buildup can attract so much dust and dirt that painters are often forced to adjust flow to cover impurities – causing inconsistent laydown, mismatched blending, dark edges and patchiness. Common remedies are anti-static wipes or solutions, but the added time, effort and material they take

can penalize you thousands of dollars a year.

The answer is the Stat-Gun. Its built-in microprocessors and tungsten emitters generate a powerful, invisible spray of positive and negative ions that effectively neutralize any surface charge. Simply hook it up to your air supply like a conventional blow gun before the base and clear coats, and

Stat-Gun removes dirt and static for a clean, neutrally charged surface.



Stat-Gun's microprocessors and tungsten emitters deliver a powerful, laser-guided ion stream that electrically neutralizes surfaces. Simply use instead of regular blowgun. Battery power eliminates cumbersome cable, lasts up to 12 hours of continuous use.

blow-clean as usual. Then watch what happens when your surface is now fully ready to accept paint. Instead of paint particles standing up (an especially irritating tendency with metallics) they cling obediently to the surface. Halos – always a problem when blending paint, especially on silver and

gold cars – become a non-issue on the newly static-free surface.

Plastic bumpers and grilles present a particularly difficult challenge with their inconsistent (and often paint-repelling) static charges. But once those charges



4 LEDs indicate state of device. Yellow (shown) means device is in use.

are eliminated, paint flows freely into every nook and cranny, and coverage is complete.

There's no longer any need to denib, either, because the tendency for particles and flakes to stand up is gone.

The only such device approved for flammable environments

Most other static remedies come with safety issues. Devices using polonium, for instance, need special handling because of their highly radioactive power source, and are hard to get

approved. Plug-in devices usually lack safety certification for flammable environments like spraybooths – and their cumbersome electrical cables make them awkward to handle.

Our Stat-Gun is designed to the highest safety standards, meeting the stringent European ATEX Directive. The Stat-Gun is approved for Zone 1 (EU classification) and Class 1 Division 1 (North American classification) for flammable areas including paint spraybooths – the only cordless, battery-operated device to achieve this certification.

Ultra-long-life lithium-polymer battery

The Stat-Gun is powered by an ultra-long-life, lithium-polymer battery and comes with its own charging stand. A fully charged battery allows about 12 hours of continuous use. For convenience, we recommend charging every night.

Once you try it, you'll see how the Stat-Gun will become a vital addition to your shop. You won't want to give it back, either.



Charging stand recharges Stat-Gun's ultra-long-life, lithium-polymer battery.

SPRAYING AWAY PROFITS?

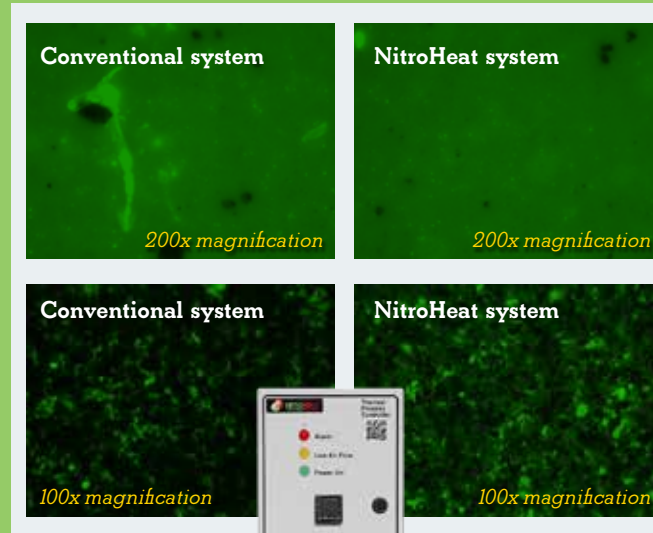
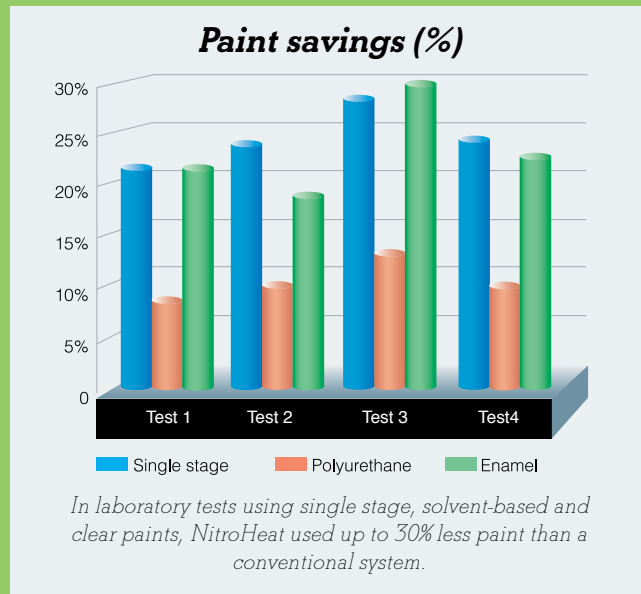
How much do you spend a year on paint? Incredibly, our new NitroHeat system can slash your paint costs by as much as 30% – thanks to its 98% pure heated nitrogen delivery. NitroHeat’s dramatically reduced overspray results in up to 30% less waste than with ordinary paint systems. Being pre-heated translates to dramatically faster flash-off – which means

you can cycle more cars through your shop. Finish quality is better than with existing systems.

Even converting is a snap, because NitroHeat plugs right into your existing setup – nothing to replace or throw away!

Let us show you how easy it is to join the many successful shops that have converted to NitroHeat.

And quit spraying away profits.

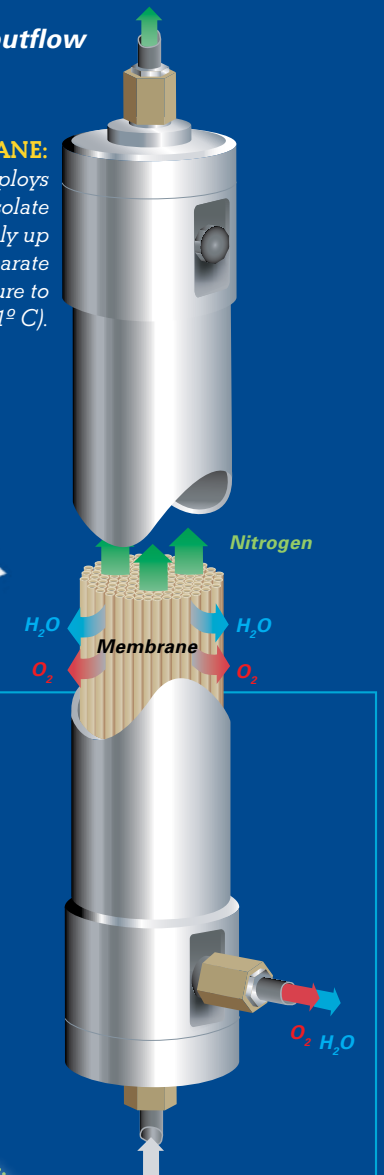


ELECTRON MICROSCOPE PHOTOS of identical surfaces painted with air and NitroHeat. Top, NitroHeat spray lays down better and transmits fewer impurities. Below, NitroHeat’s more evenly distributed particles give a brighter, more reflective surface.

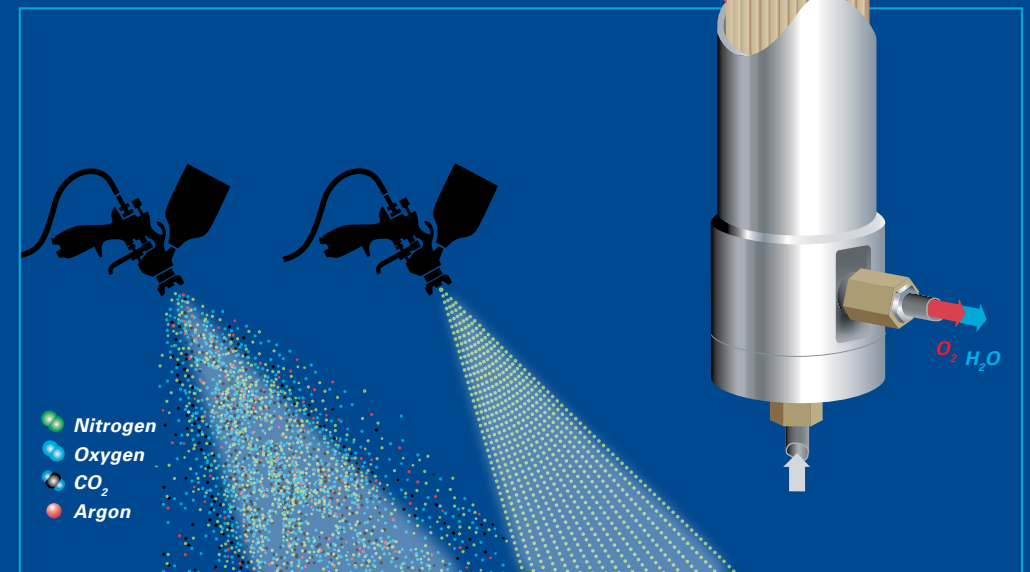


Nitrogen outflow

THE NITROGEN MEMBRANE:
The NitroHeat system employs a series of filters and tanks to isolate nitrogen. The system can supply up to three painters at a time. Separate heater raises desired temperature to as high as 160° F (71° C).



WHY 98% NITROGEN IS BETTER:
Conventional air propellant (left) carries multiple molecules of different sizes and impurities travelling at different speeds, resulting in collisions, overspray and uneven distribution of paint particles. 98% nitrogen molecules in NitroHeat propellant (right) – carrying the same amount of paint – travel at the same speeds and distribute themselves more evenly.



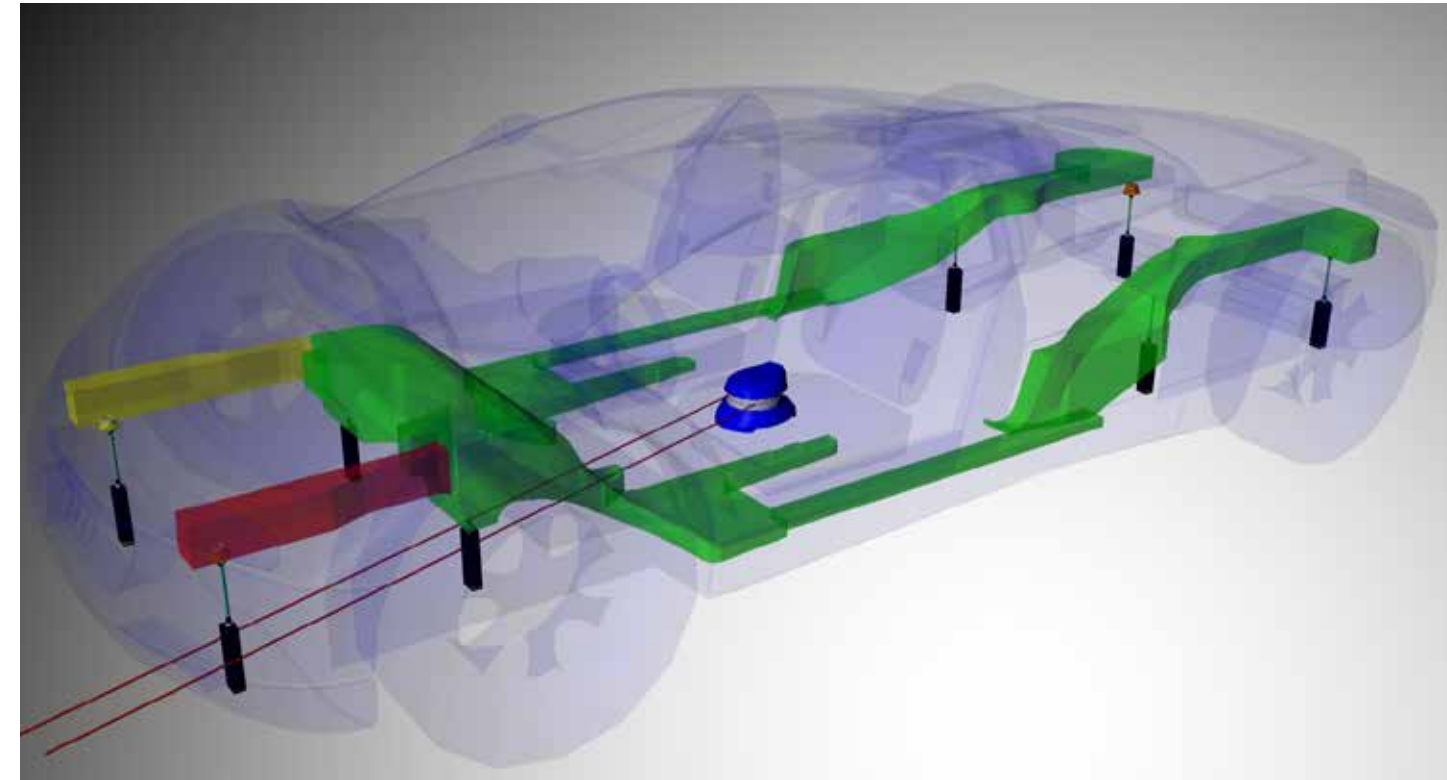
THE LASER MEASURING SYSTEM THAT OVERSHADOWS THE REST.

Need the fastest, most accurate laser measuring system ever devised? The Eclipse Electronic Measuring System combines a polar laser scanner with portable 'Live Targets' and Intelligent Stems positioned by the body technician at strategically marked frame or body points.



Each sweep of the laser precisely locates each of the targets, which then transmit the measurements to the computer and its database of manufacturer specifications. As the pulling process begins, the Live Targets' verification lights change to indicate severity of damage – to red, yellow or green depending on closeness to manufacturers' specifications. When all lights are green, the frame is restored to its proper measurements.

The Eclipse system is very easy to use, and includes live online training from Eclipse's tech support department with every purchase.



360-degree Polar Laser Scanner calibrates on every sweep at 4 times per second. The Scanner and Precision Target Adapters can be placed anywhere under the vehicle or on its side. Tested and proven in aircraft manufacturing, the scanner surpasses all other measuring technology and is the new standard for electronic measuring in the collision repair industry.

ECLIPSE SYSTEM PROVIDES:

- Computer plus 3D software
- 12 Intelligent Targets
- Full set aluminum/magnesium attachments
- Upper body measuring system
- Wireless internet capability
- Web based or in-shop training
- First year data
- Quarterly data updates
- 1 Year warranty on AMS components
- 32-foot measuring envelope
- 4 times per second measurement updates



Precision Target Adapters (top) attach easily to reference points and to Intelligent Stems (left) to give real-time status of corrections. Polar Laser Scanner (above) locates targets and sends measurements to computer.

Wedge Clamp is the official distributor of Eclipse in California and in Canada.



Mobility Wheel Set (#10200)
The Mobility Wheel Set is unique to Wedge Clamp, and lets you move a disabled vehicle while it's still mounted on the anchoring system.



GM "R" Hook (#14026)
3/8 in. (10 mm) chain, 11 in. (279 mm) overall length.



Car Bench Adapter (#15750)
Set of two brackets allows mounting of #19000 and #19100 Pivot Measuring System to popular bench systems.



Double Looper (#14110)
Comes with two single claws and a triangle for centre pulls. Grabs bumpers or panels.



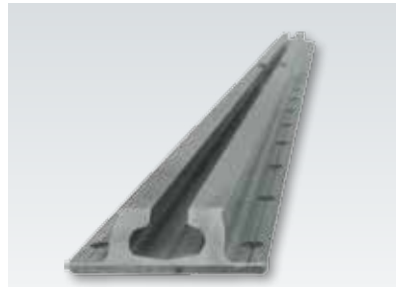
Hole Plug (#14116)
4-way anchoring tool for unlimited body and frame hook-up in existing holes. Attaches directly to 3/8 in. (10 mm) chain.



Strut Tower Multi-Adapter (#14404)
For a wide variety of strut towers. Fast hook-up and pulling in any direction. Allows measurements with tram gauges.



Chain Cinch (#14305)
Chain tightener works with an air impact wrench to remove chain slack in seconds.



Anchoring Rail (#17700)
The Wedge Clamp aluminum anchoring rail gives you unobtrusive, secure anchoring. Easy to clean out and won't corrode. Length: 7 ft. (2.13 m)



Floor Anchoring Pot (#17302)
3 1/2 in. (89 mm) cast iron construction. Precision machined for perfect fit. Zinc plated for corrosion resistance. Unique design facilitates replacing damaged chain.



Nylon Sling (#14411)
Protects areas where chain may damage structure. In 30 in. (762 mm) and 60 in. (1.52 m) lengths.



Double Claw Hook (#14503)
For use with 3/8 in. (10 mm) chain as a chain shortener, chain connector or double hook.



Unibody Clamp (#14504)
Deep throat to fit over flanges. Removable pull rings.



Pot Press Kit (#17350)
Tensions floor pots into concrete floor. Also removes pots.



Square Rail Clean-out (#17703)
Allows easy cleanout for flush-mounted anchoring rails with square ends. For rails with bevelled ends (#17902).



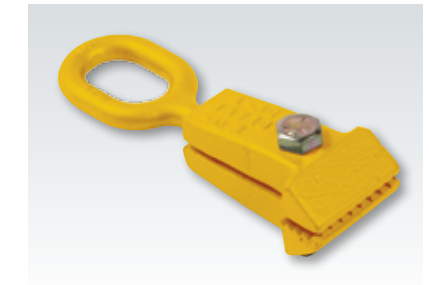
High Lift Floor Jack (#14852)
Rapid lift, light and sturdy. Low pick-up point 5 in. (127 mm), high lifting point of 30 in. (775 mm), 4000 lbs (1818 kg) capability. Available on request: #14850 3000-lb High Lift Jack.



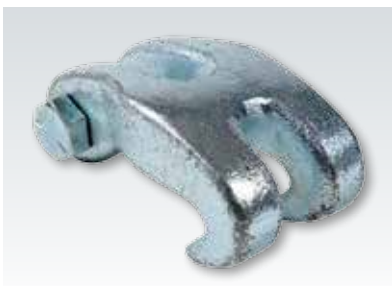
Fast Clamp (#14505)
Heavy-duty, self-tightening clamp with tooth design for strong grip and minimal metal distortion.



B Clamp (#18000)
2-1/4 in. (57 mm) wide by 1 in. (2.54 cm) deep grip. Self-tightening, ideal for hard pulls on heavy metal or frame.



Dyno-Mo W Clamp (#18004)
2-1/4 in. (57 mm) wide by 1-3/4 in. (45 mm) deep grip. Self-tightening, wider tooth surface to grab thin metal without tearing.



Claw Hook Assembly (#09067)
Comes with nut and bolt for 3/8 in. (10 mm) chain. Use as an accessory with draw bars on chain.



Ford "T" Hook (#14027)
3/8 in. (10 mm) chain, 12 in. (305 mm) overall length.



1/2 in. Screw Pin Shackle (#14102)
This Pin Shackle comes with a triangle.



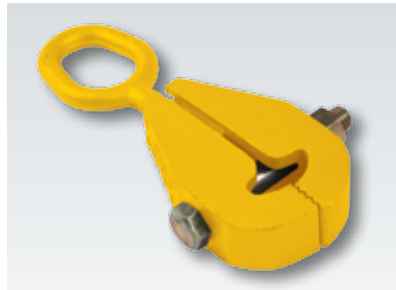
W Clamp (#18005)
4-1/4 in. (108 mm) wide by 1 in. (2.54 cm) deep grip. Self-tightening. A super clamp for tough jobs, with ultra-wide gripping surface.



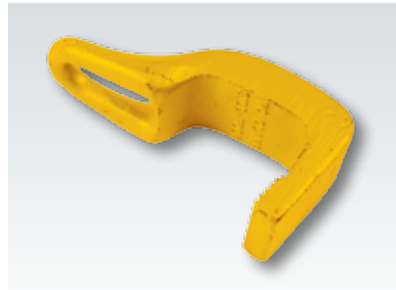
Mini Spring Clamp (#18007)
1-1/2 in. (38 mm) wide by 3/4 in. (19 mm) deep grip. Spring loaded for easy opening. For light sheet metal in tight places.



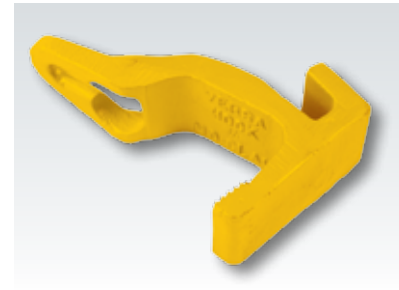
Mini Bite (#18008)
1-3/4 in. (45 mm) wide by 1 in. (2.54 cm) deep grip. This Mini Bite Clamp also comes with a pull ring.



Mini C Clamp (#18009)
1-1/2 in. (38 mm) wide by 3/4 in. (19 mm) deep grip. Self-tightening. Butts against panels where only a narrow bite is available.



Sill Hook (#18014)
2-1/2 in. (64 mm) wide by 1 in. (2.54 cm) deep grip. For quick pulls anywhere.



Versa Hook (#18015)
2-1/2 in. (64 mm) wide by 1 in. (2.54 cm) deep grip. Use as pulling device for rocker panels, door posts, windshield posts, etc.



Frame Rack Unibody Clamp (#18062)
Two pair of jaws with 12 in. (305 mm) draw bar with shackle and oval loop.



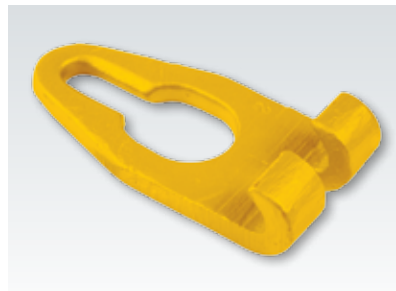
Sheet Metal Hooks (#18064)
Small Flat Nose (#14113)
Small Round Nose (#14142)
Large Flat Nose (#14112)
Large Round Nose (#14141)



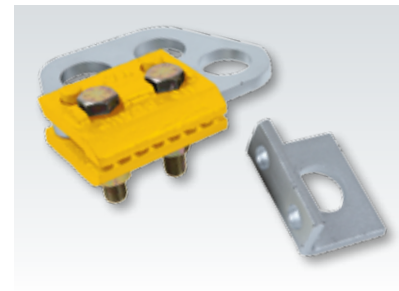
Junior Clamp (#18068)
Self-tightening, thin-edged nose for hard-to-reach places.



Angle Bite Clamp (#18016)
2-1/2 in. (64 mm) wide grip. Self-tightening, self-cleaning with gator tooth design and 45° head for hard-to-pull areas.



Track Hook (#18018)
Quick tie-down for track systems or back anchoring on frame racks. For pulling damaged areas, or for chain shortening or lengthening. Use slot for 3/8 in. (10 mm) chain hook-up.



Multi Angle Clamp (#18019)
3-3/4 in. (86 mm) wide by 3/4 in. (19 mm) deep grip. For pulling from any direction within a 180° arc. Pull plate makes two-way pulling faster and easier.



Narrow Draw Bar (#18076)
Comes with a single claw 2-1/2 in. (64 mm) wide bar.



Finger Hook (#18088)
Use with 3/8 in. (10 mm) chain for quick pulls on openings.



Downpull Attachment (#18093)
For downward pulls on frame racks or floor systems.



Jumbo Deep Hook Set (#18021)
10 in. (25.4 cm) throat depth with a 15 in. (381 mm) opening.



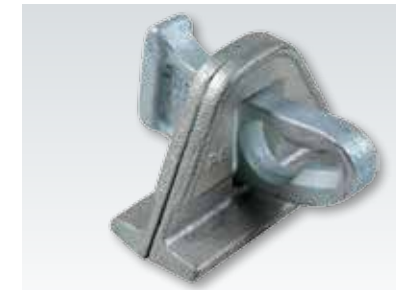
Numerous Angle Puller (#18022)
Use with 3/8 in. (10 mm) chain to pull from any angle. Put the bolt through a 1/2 in. (13 mm) hole to pull. Use with #14404 Multi-Adapter Plate.



Frame Rack Clamps (#18031)
Two pair jaws with 12 in. (305 mm) draw bar, one side pull bracket, shackle and oval loop.



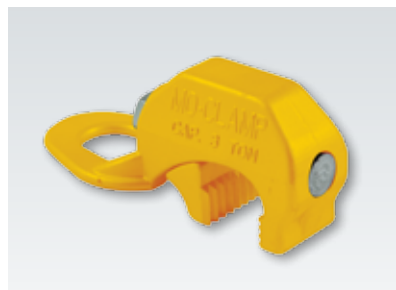
Narrow Rail Clamp (#18200)
Anchors chain to aluminum rails on Wedge Clamp System.



Wide Rail Clamp (#18300)
Anchors chain to various steel rail systems.



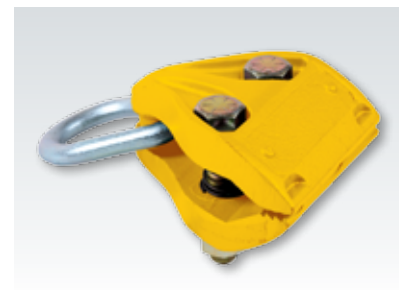
Lip Grip (#18402)
Use as sandwich clamp on quarter panels or floor sections. Side pull bracket adds 90° angle for two-direction pulling.



Tight Opening Clamp (#18052)
1-1/2 in. (38 mm) wide by 1/2 in. (13 mm) deep grip. For support and upper sheet metal areas where other clamps can't reach. Perfect for small pick-up frame rails.



Nylon Sling w/ metal triangles (#18053)
Protects metal finishes from scratches and damage.



3-Way Pull Clamp (#18060)
Includes oval loop. Recessed pockets hold bolts for easy tightening.



Box Clamp (#18404)
Use to reach around flanges and other obstructions to grip hard-to-reach surfaces. Heat-treated jaws with aggressive tooth design for hard pulling power.



JR Clamp (#18409)
Self-tightening, basic must-have clamp with 1-1/2 in. (38 mm) wide bite for aggressive pulling.



Flash Clamp (#18414)
5-ton spring-loaded clamp with pivoting heads for secure grip on uneven surfaces. Heat-treated jaw casting for longevity and replaceable teeth. Also available in 3-ton and 7-ton.



Multi-angle Clamp (#18457)
6 ton, self tightening 120 degree swivel.



Side Pull Bracket (#18458)
4-1/4 in. (108 mm) length by 2-5/8 in. (67 mm) wide grip.



Pulling Hook (#18459)
8 ton, 14-1/2 in. (368 mm) throat opening. Use with #18460 extension or #18473 McPherson Set.



McPherson Universal Set (#18473)
Strut tower attachment for lighter pulls (shown with #18459 Pulling Hook – order separately).



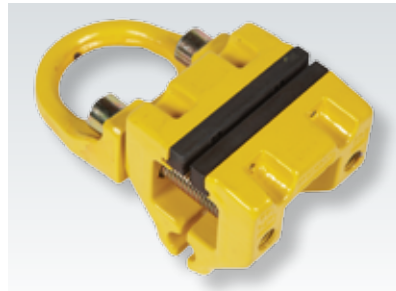
11-piece Aluminum Repair Kit (#18474)
11 piece hammer and dolly set for aluminum repairs.



McPherson Universal 15 pc Set - Heavy Duty (#18476)
Set of strut tower attachments for multi-directional, heavy pulls.



Pulling Hook Extension (#18460)
9 in. (229 mm) overall length, 5 in. (127 mm) pulling surface. Use with #18459.



Edge Clamp With Side Pull (#18470)
6 ton, wide throat with 3-1/8 in. (79 mm) grip, 6-1/2 in. (165 mm) length including side pull bracket.



Inline Slider Clamp (#18464)
7-1/2 in. (191 mm). Self-tightening for lateral pulls with 2-1/2 in. (64 mm) slider opening.



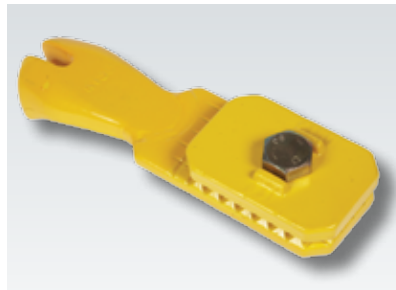
Chain Lock (#20061)
Used on 3/8 in. (10 mm) chain as a chain stopper that locks chain tight. Maintains chain tension while adjusting for pulls.



Gauge (#20113)
Universal hydraulic pressure gauge. Fits most hydraulic pumps.



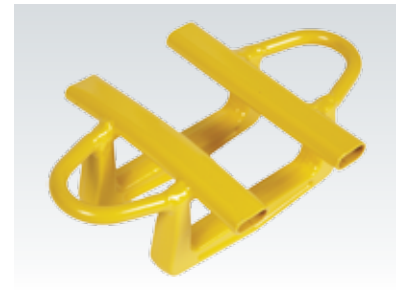
3/8 in. (10 mm) Alloy Clevis Slip Hook (#21006)
3-3/4 in. wide by 3/4 in. (95 x 19 mm) deep grip.



Sandwich Clamp (#18465)
8-1/2 in. (216 mm) overall length with 3-1/2 in. x 2-3/8 in. (89 x 60 mm) wide gripping surface.



Side Pull Edge Clamp (#18466)
8-1/2 in. (216 mm) length by 2 in. (51 mm) wide grip with shackle.



Small Wheel Opening Puller (#18467)
7 in. (178 mm) width with one straight edge and one radius.



Alloy Chain (#21009)
3/8 in. (10 mm) Grade 80 carbon steel protectively plated chain. Available in any length.

WE DISTRIBUTE MO-CLAMP
Wedge Clamp is a distributor of Mo-Clamp products. Contact us for more info.



Large Wheel Opening Puller (#18468)
13 in. (330 mm) width with two different radius edges.



Door Adjuster (#18471)
Handy door adjuster tool. 27 in. (686 mm) overall length with 7 in. long x 2 in. wide (178 x 51 mm) blade.



Sheet Metal Bender (#18472)
Easily bend sheet metal panels. HD 19 in. (483 mm) length with 3/16 x 2-1/4 in. (4.8 x 57 mm) and 1/8 x 2-1/4 in. (3 x 57 mm) openings.

Additional clamps available (not shown).





Chain Board Kit (#95100)

These tools were carefully selected to let you tackle a variety of collision repairs, especially on frame-type vehicles and light trucks. This board is equally useful for the complex and more critical unibody structural pulls. All Wedge Clamp chain is the highest Grade 80 alloy – built to endure the toughest bodyshop conditions. Each item also available individually.

Board, 24 x 48 in. (610 x 1220 mm) includes:

- 1 Chain and Hook, 10 ft. (3.05 m) (#13058)
- 1 Chain Shackle (#14102)
- 1 Claw Chain Eye Assembly (#14105)
- 1 Cable Sling (#14108)
- 1 Frame Plug with Chain (#14109)
- 1 Double Claw Hook (#14110)
- 1 Sheet Metal Hook, Flat 15 in. (381 mm) (#14112)
- 1 Sheet Metal Hook, Flat 12 in. (305 mm) (#14113)
- 1 Any Angle Puller, 5/8 in. (16 mm) (#18023)
- 1 Narrow Pull Bar, with Single Claw Hook (#18076)



Clamping Kit (#95500)

It's important to get the right hold on what you're pulling so your pulls will be safe and prevent secondary damage. This board contains some of the most versatile pulling clamps available to let you handle a wide range of repairs. Each item also available individually.

Kit includes:

- 1 McPherson Strut Kit (#14404)
- 1 Nylon Sling (#14411)
- 1 Mini Pull, with Spring (#18007)
- 1 Reversible Mini Pull (#18008)
- 1 Flange Hook (#18014)
- 1 Multi Angle Pull Clamp (#18019)
- 1 H - T Jaws, with Bar (#18030)
- 1 Three Way Pull Clamp (#18060)
- 1 Side Pull Bracket, with Shackle (#18065)
- 1 Large Mouth Clamp (#18085)
- 1 Clevis Slip Hook c/w Pin, 3/8 in. (10 mm) Chain (#21006)
- 1 Tool Board, 24 x 48 in. (610 x 1220 mm) (#95500)

Down Pull Tool Board (#15900)

Lets you make down pulls anywhere under the vehicle. Uses a floor rail configuration that extends under the front area of the vehicle. Works with floor rails spaced at 6 ft. (1.83 m) to 6 ft. 4 in. (1.93 m) center to center. Mounting board is 84 x 24 in. (2.13 x .61 m).



SPLIT DECISION?

Having separate workstations for steel and aluminum to prevent cross-contamination is a necessary part of today's auto repair business. Nobody has a better solution than Wedge Clamp. Our superior affordability makes setting up Wedge Clamp metal-specific stations far more economical than other systems. Worried about losing space? Wedge Clamp components hang on the wall when not in use, so they take up little or none of your valuable floor area. We've even color-coded them for convenience: yellow for steel, grey for aluminum. It all adds up to a unanimous decision for Wedge Clamp.

The Wedge Clamp Warranty

Wedge Clamp Anchoring and Measuring Systems are warranted against defects in materials and workmanship for a period of five years from the date of original retail purchase. Wedge Clamp Pulling Systems (Quick-Pull 5000, EZE Roller and Monocoque) plus tool board accessories are warranted for one year from date of original purchase. Products not manufactured by Wedge Clamp will carry their manufacturer's warranty, which may be less.

The Wedge Clamp warranty is expressly limited to persons who purchase Wedge Clamp products or parts for use in the ordinary course of the buyer's business. This warranty does not apply to any product which has been abused, worn out, overloaded, improperly maintained, heated, ground or otherwise altered, used for a purpose other than that for which it was intended, used in a manner inconsistent with any instructions regarding its use, or if any Wedge Clamp serial number has been removed or defaced, or if it has been purchased from an unauthorized person or dealer.

If any part of the Wedge Clamp Anchoring or Measuring System is found to be defective by Wedge Clamp, in its sole judgement, Wedge Clamp will, at its option, either repair or replace such defective product

or part provided the product is returned during the warranty period with proof of purchase date. Warranty claim items should be sent prepaid to the nearest authorized Wedge Clamp dealer within the country of original retail purchase. Please attach your name, address, telephone number, a description of the problem and a copy of a bill of sale with the appropriate Wedge Clamp serial numbers as proof of date of original retail purchase, to each product returned for warranty service.

Liability under this guarantee is limited specifically to repair and/or replacement of parts at the option of Wedge Clamp. This remedy shall be the sole and exclusive remedy available for any defects in the products or parts manufactured and sold by Wedge Clamp or for any damages resulting from any other cause whatsoever, including without limitation Wedge Clamp's negligence. Wedge Clamp shall not in any event be liable to any buyer for consequential or incidental damages of any kind, whether for defective or non-conforming goods, negligence, on the basis of strict liability or for any other reason. This warranty is exclusive, and no agent, employee or representative of Wedge Clamp has any authority to bind Wedge Clamp to any affirmation, representation or warranty concerning Wedge Clamp products or parts, except as stated herein.

EZELift: Small footprint, big convenience.

With its modest footprint and amazing compactibility, the Wedge Clamp EZELift #97200 takes up very little shop space. Yet it can easily lift vehicles from as small as today's ultra-compact to full-size pickups and SUVs.



Engineered to combine amazing strength and speed in a compact, retractable package, the EZELift boasts the smallest available platform in a scissor lift. It has the versatility you need for today's smaller, short-wheelbase cars, yet is strong enough to hoist a full-size 6000 lb pickup.

Four extending arms and contact points turn lifting into a quick and simple one-step process, so your employees can work on more cars in less time. And when not in use, it retracts into an unobtrusive



Retracted, the EZELift sits flush in a recessed floor. Can also be used at grade.



Strong pawl-and-ratchet safety lock securely maintains height. Hand-held control with coiled extension cord operates hydraulics.

34.5 x 38 in. (876 x 965 mm) slab, taking up less of your precious real estate.

The EZELift is easy on the body, as well, because its variable locking lets you set the best working height for any situation. And its heavy-duty pawl-and-ratchet safety lock gives your workers the confidence of knowing their vehicle will stay at the height they've set.

All mighty good reasons to put an EZELift in your shop.



The EZELift meets or exceeds ANSI/ALI standards, with proof load tests to 150% of its 6000 lb maximum capacity.

Getting one is an EZE decision

- Combines amazing strength with a compact footprint
- Designed and built in Canada to the highest standards including ANSI/ALI, CSA and CE
- High-capacity bearings for superior performance
- Plated and powder-coated surfaces for superior durability
- Above-floor or recessed installation
- Single phase 110v or 220v



Not familiar with Wedge Clamp? Call us – we'll train you!

Wedge Clamp provides unibody and full-frame repair training that's insurance company-accredited and available to both customers and distributors. Our full-frame and unibody courses cover:

- damage diagnosis
- dealing with suspension and mechanical components
- pulling and straightening systems
- anchoring systems/problems
- measuring principles
- pulling techniques
- how to repair specific types of damage
- electronic measuring

Course content may be adapted for specialized training needs. Training is available on-site or at Vancouver Community College (VCC) in British Columbia, Canada. The facility is fully equipped with frame and unibody repair equipment, vehicles and audio/visual capabilities. Qualified experts use professional materials to facilitate all training. Simply contact Wedge Clamp at 1.800.615.9949 to register.





WEDGE CLAMP SYSTEMS INC.

CANADA: #170 - 21320 Gordon Way, Richmond, BC V6W 1J8
Tel: 604.207.9595 • Toll-free: 1.800.615.9949

USA: 3220 East Airport Way, Long Beach, CA 90806
Tel: 562.264.2920 • Toll-free: 1.888.852.7879

Website: www.wedgeclamp.com
Email: info@wedgeclamp.com

CHINA: 2nd Floor, South Building,
111 Zhong Shan Dong Lu, Suzhou, Jiangsu
215100 CHINA

Phone 86.0512.6299.8536

Website: www.wedgeclamp.com.cn

Distributor: